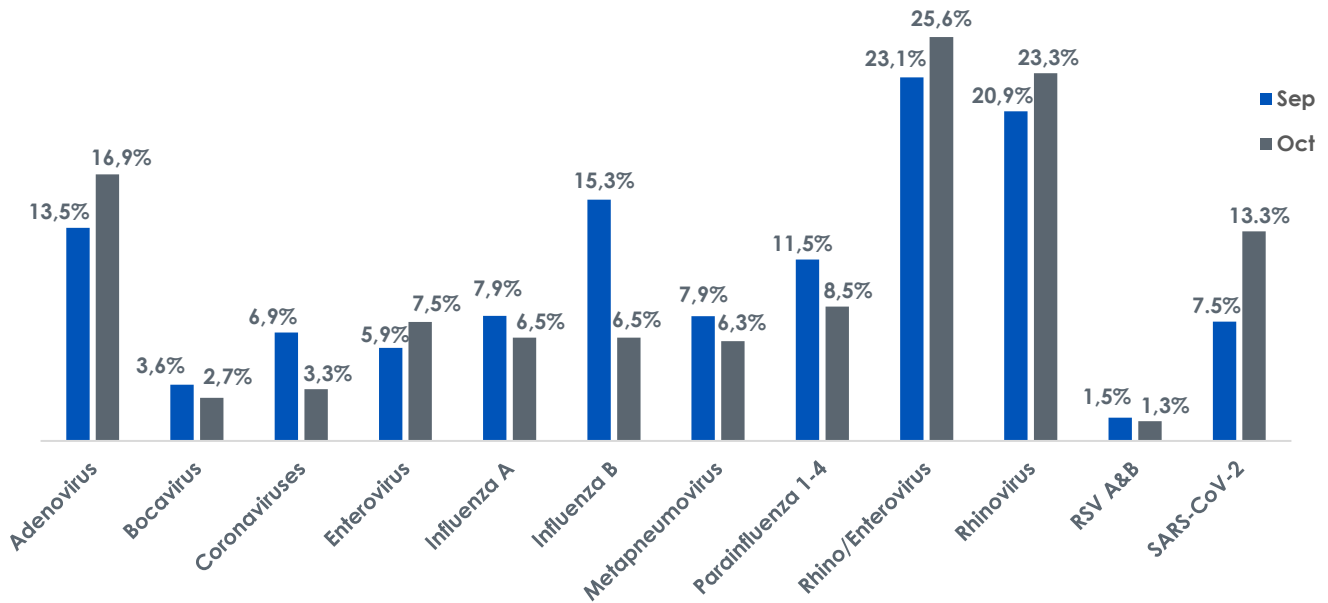


RESPIRATORY VIRUS STATISTICS

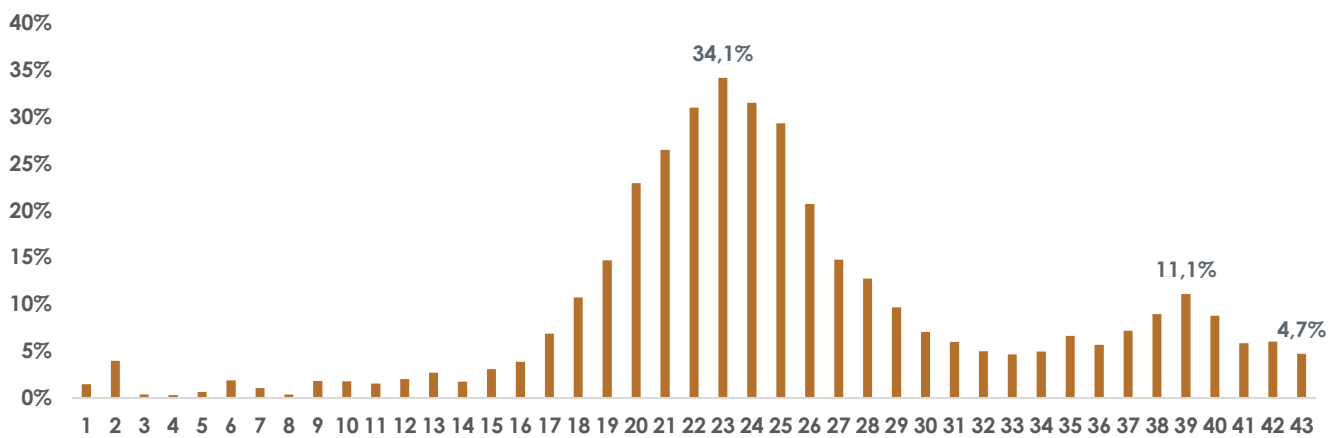
September/October 2022



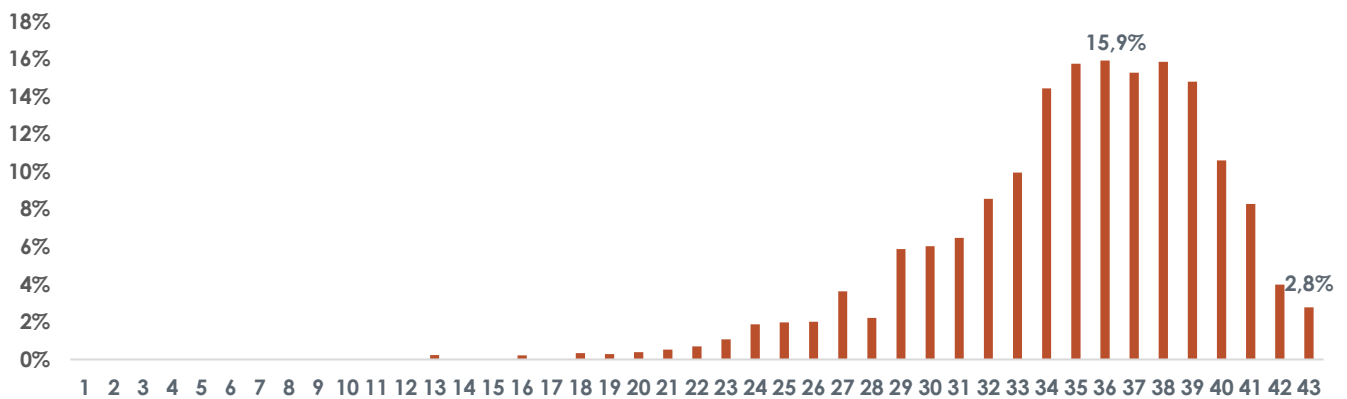
Percentage of Specimens Positive on the Respiratory Viral Multiplex PCR and SARS-CoV-2 PCR



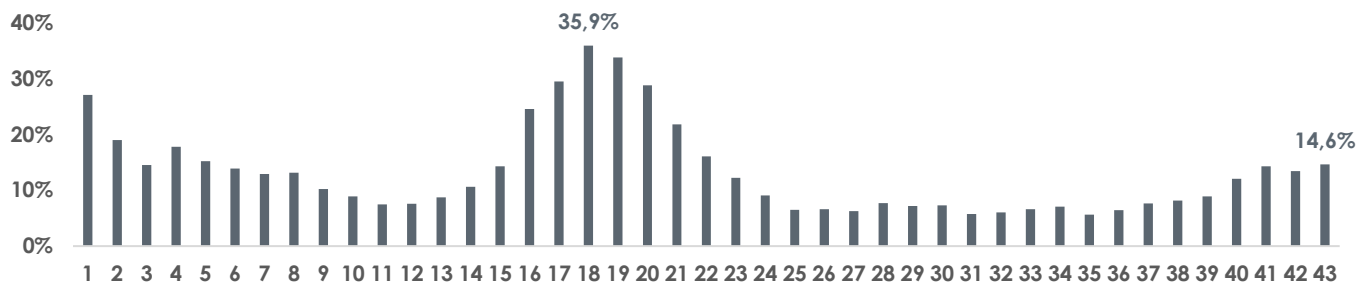
Percentage of Specimens Positive: Influenza A PCR



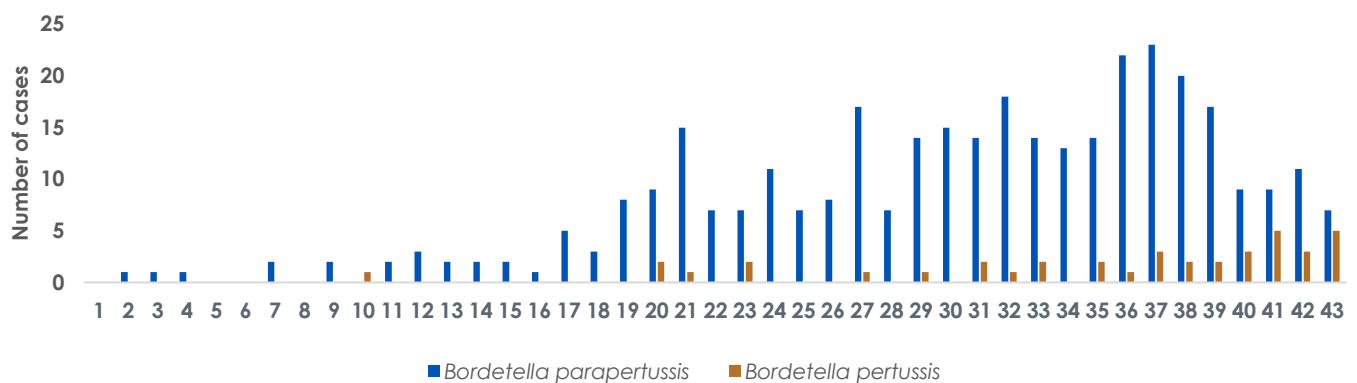
Percentage of Specimens Positive: Influenza B PCR



Percentage of Specimens Positive: SARS-CoV-2 PCR



B. parapertussis and *B. pertussis*



	<i>B. parapertussis</i>		<i>B. pertussis</i>	
	Cases	Percentage	Cases	Percentage
0-6 m	39	11%	16	41%
>6-12 m	34	10%	0	0%
1-5 yrs	191	56%	10	26%
6-12 yrs	65	19%	7	18%
13-18 yrs	4	1%	2	5%
19-64 yrs	9	3%	3	8%
≥ 65 yrs	1	0%	1	3%
Total cases	343		39	

Comments

- The most frequently detected viruses during October were rhino/enterovirus (25.6%), rhinovirus (23.3%) and adenovirus (16.9%).
- Influenza A circulation is currently at low levels, with only 4.7% of specimens testing positive during week 43.
- Influenza B circulation is currently at low levels, with only 2.8% of specimens testing positive during week 43.
- SARS-CoV-2 circulation has increased between weeks 40-43 with 14.6% of specimens testing positive during week 43.
- *B. parapertussis* case numbers have declined between weeks 40-43. Children between the ages of 1-5 years of age represent the majority of positive cases (56%).